

PaN-Finder: a better way to search open PaN data

```
{
  "query": "pharmacology effects lung...",
  "limit": 50
  "include": [
    { "relation": "datasets",
      "where": { "and": [
        "name": "incident_wavelength",
        "value": { "between": [ 1.9, 2.5 ] },
        "unit": "angstrom",
      ]}},
    ...
  ],
}
```

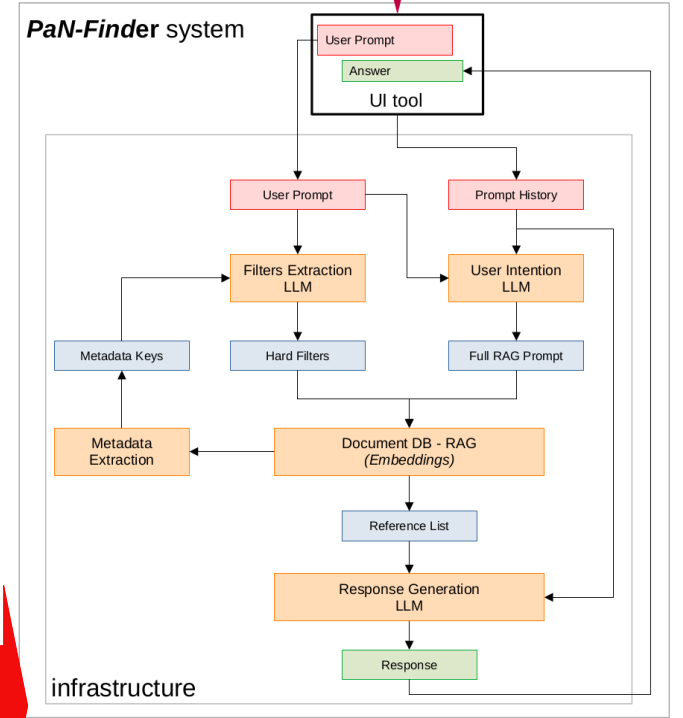
Find the **50** most relevant **datasets** related to **pharmacology effects** on **lung tissues** infected with **Covid**, where the **incident wavelength** was between **1.9 and 2.5 Angstrom** and the **sample** was kept at a **temperature lower than 10 celsius**?
-- Please --

ML, AI, LLM, Embeddings - Better User experience

PaNOSC Data Portal



PaN-Finder system



Legend:

